

KMD 985

Manual Valve DN 15 - 100 mm (3/4" - 4")



DN 15 - 50

Features

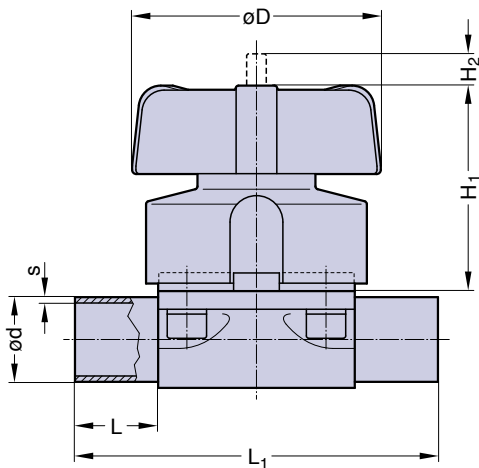
- Plastic bonnet and plastic hand wheel
- Non rising hand wheel with optical indicator
- Flexible diaphragm suspension
- Encapsulated diaphragm
- CDSA sealing concept, see page 30

Optional

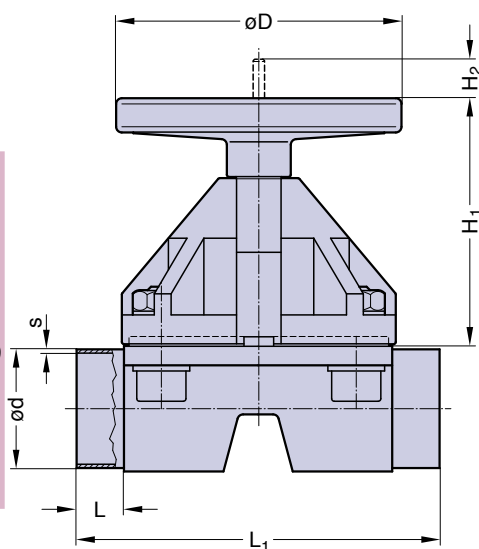
- Adjustable travel stop or stroke limiter on top
- Sealed bonnet
- Locking device

Technical Data

- Control function: Manually operated
 Max. working pressure: 10 bar (150 psi)
 DN 65-100 diaphragm PTFE 8 bar (115 psi)
- Max. working temperature: S-Version 80°C (176°F)
 HS-Version DN ≤ 50 150°C (300°F)
 dependent on application
- Diaphragm material: EPDM or PTFE
 Valve body material: Forged 1.4435/ 316L ASME/BPE
 Investment cast 1.4435/ 316L
 Other Alloys
- End connection: Butt weld ends see fold out page 19
 Clamps and flanges see page 20 and 21
 Special ends
- Suitable for:
 Bonnets up to DN 50: Two-Way bodies
 Bonnets bigger DN 50: Two-Way bodies
 Welded configurations
 T- bodies
 Multiport bodies
 Tank bottom bodies
- Flow rate: Kv in m³/h (Cv in GPM) see page 9
 Diaphragm size: MA see table



DN 15 - 50



DN 65 - 100 (Drawing MA 80)

Butt weld ends
 MA 25 - 100
 Fold out page 19

DN (mm)	MA	Dimensions (mm)					Total weight ca. (kg)	
		L	L ₁	H ₁	H ₂	D	Investment cast	Forged
15-25	25	25	120	71	10	90	0,8	0,9
32-40	40	25	153	91	14	114	1,6	1,9
50	50	30	173	110	23	140	2,6	3,7
65	80	30	216	180	38	198	7,0	9,0
80	80	30	254	180	38	198	7,0	9,0
100	100	30	305	220	50	252	14,0	12,0

Ordering key see page 56.