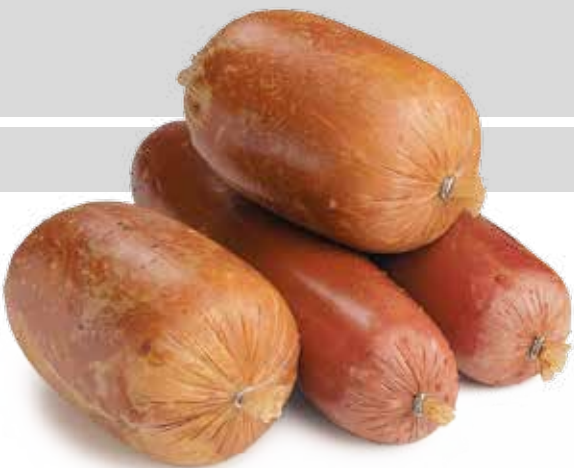


**PCD**

**Press-Clip Machine**



**innovative · reliable · leading**

**poly-clip<sup>®</sup>**  
**SYSTEM**

- Machine specialized in closing stretch casings
- Adjustable tension control
- Easily combines with filling machines, ham presses and funnel filling systems

## Applications

The special clipping machine PCD is suitable for closing stretch casings of different sizes. Typical products are cooked ham, smoked products, poultry meat as well as whole muscles which are to be processed afterwards. Large calibres up to 200 mm can be closed easily.

## Advantages

- Produces a uniform and high quality product
- Calibration of whole muscles (e. g. chop sides)
- Easy placement of casing in clamping carriage
- Pneumatic cut-off knife for removing excess casing ends
- Easy handling as a result of combined functions: The self-locking latch closure controls the clamping and the gripping carriage



## Function and operation

The PCD is pneumatically operated. The casings are pulled through the separator opening by a clamping and gripping carriage until the product meets the quality requirements. The pulling force can be increased or reduced by adjusting the pressure control valve. The clipping impulse is then triggered by the valve lever.

## Technical data

Width:	1,000 mm
Depth:	300 mm
Height:	1,000 mm
Weight:	29 kg
Compressed air:	5-7 bar/ 0.5-0.7 MPa
Air consumption:	8.5 NL/cycle

Suitable clip sizes:

PCD 7026: S 735/740/744/747

PCD 8026: S 844/848/854/860

