

Item description/product images



Description

Material:

Pull handle stainless steel 1.4305 / 1.4404.
Fastening material 1.4301.

Version:

Polished.

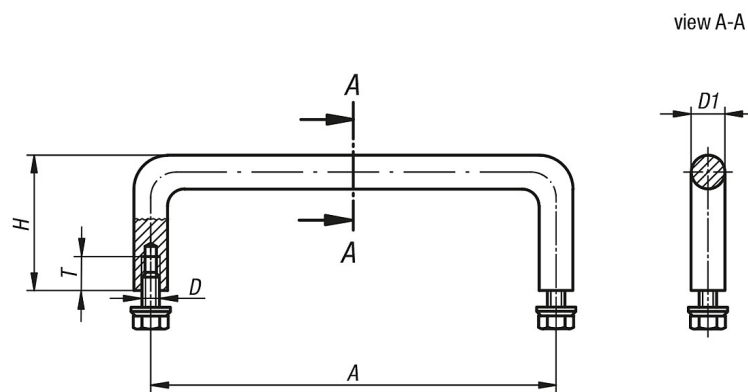
Note:

Stainless steel pull handles are used mainly in the food industry and medical, laboratory and nuclear technology. Designed for heaviest loading and high chemical and corrosion resistance.

On request:

Other sizes and materials, fasteners in 1.4404.

Drawings



Overview of items

Order No.	Material	A	D	D1	H	T	Load capacity N
20-27-1	1.4305	100	M5x10	8	35	10	1000
20-27-2	1.4305	120	M5x10	10	40	10	1000
20-27-3	1.4305	250	M5x10	10	40	10	1000
20-27-4	1.4305	350	M5x10	10	40	10	1000
20-27-101	1.4404	100	M5x10	8	35	10	1000
20-27-102	1.4404	120	M5x10	10	40	10	1000
20-27-103	1.4404	250	M5x10	10	40	10	1000
20-27-104	1.4404	350	M5x10	10	40	10	1000