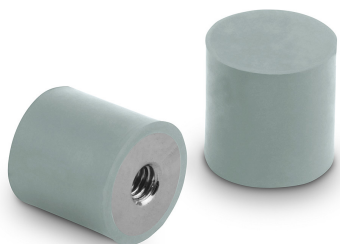


Item description/product images



Description

Material, version:

Metal parts, stainless steel 1.4401.

Elastomer, natural rubber, hardness medium Shore 55A, grey.

Note:

Rubber-metal buffers are widely-used construction devices that serve as elastic supports. They are used, among other things, as mounting elements for plant units, motors, compressors, pumps and testing machines.

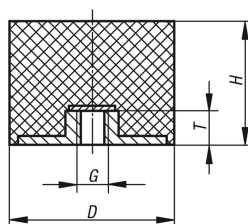
Temperature range:

-30°C to +80°C.

On request:

Metal parts, stainless steel 1.4301.

Drawings



Overview of items

Order No.	D	H	G	T	Approx. weight kg
50-170-1	8	8	M3	3	0,002
50-170-2	15	12	M4	4	0,004
50-170-3	15	15	M4	4	0,005
50-170-4	15	20	M4	4	0,007
50-170-5	20	15	M6	6	0,012
50-170-6	20	20	M6	6	0,014
50-170-7	20	25	M6	6	0,015
50-170-8	25	15	M8	6	0,017
50-170-9	25	25	M8	6	0,021
50-170-10	25	30	M8	6	0,025
50-170-11	25	40	M8	6	0,028
50-170-12	30	15	M8	8	0,028
50-170-13	30	25	M8	8	0,03
50-170-14	30	30	M8	8	0,039
50-170-15	30	40	M8	8	0,045
50-170-16	40	20	M8	8	0,052
50-170-17	40	25	M8	8	0,058
50-170-18	40	30	M8	8	0,064
50-170-19	40	40	M8	8	0,079
50-170-20	50	20	M10	10	0,079
50-170-21	50	25	M10	10	0,092
50-170-22	50	30	M10	10	0,112
50-170-23	50	40	M10	10	0,123
50-170-24	50	50	M10	10	0,146
50-170-25	60	30	M10	10	0,189
50-170-26	60	40	M10	10	0,209
50-170-27	60	50	M10	10	0,229

Overview of items

Order No.	D	H	G	T	Approx. weight kg
50-170-28	70	42	M10	10	0,268
50-170-29	70	45	M10	10	0,277
50-170-30	75	25	M12	12	0,216
50-170-31	75	30	M12	12	0,232
50-170-32	75	40	M12	12	0,295
50-170-33	75	50	M12	12	0,34