

**Item description/product images**



**Description**

**Material:**

Forged parts: stainless steel 1.4051.

**Version:**

Bright.

**Note:**

Same torque transmission as previous steel shrink discs.

Shaft/bore tolerance h8,  
Rz max. 16µm.

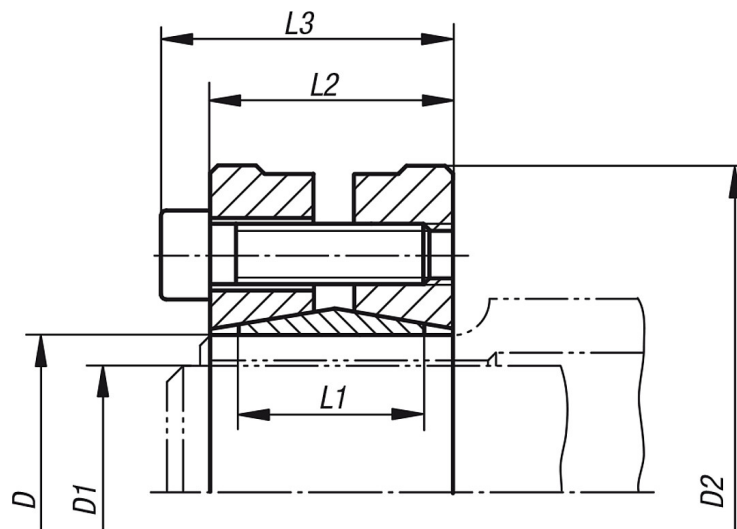
**Application:**

- Pumps
- Drives
- Conveyor systems
- Wind power units

**Advantages:**

High torque transmission, external clamping, good concentricity.

**Drawings**



**Overview of items**

Order No.	D	D2	L1	L2	L3	Clamping screws DIN 912	No off fastening screws	Tightening torque max. Nm	D1	Torque transmissible T Nm	Axial force F kN
70-9-1	24	50	15	21	25	M5	6	5	357	220	32
									20	272	35
									21	325	37
70-9-2	30	60	18	23	27	M5	7	5	292	390	38
									24	435	41
									25	465	43
70-9-3	36	72	19	25	29	M6	5	12	307	442	50
									30	575	58

**Overview of items**

Order No.	D	D2	L1	L2	L3	Clamping screws DIN 912	No off fastening screws	Tightening torque max. Nm	D1	Torque transmissible T Nm	Axial force F kN
<b>70-9-4</b>	38	72	21	27	31	M6	6	12	340	31	58
										29	62
										30	65
<b>70-9-5</b>	40	72	21	27	31	M6	6	12	305	31	64
										30	60
										31	60
<b>70-9-6</b>	44	80	22	28	30	M6	7	12	283	32	61
										35	62
										36	72
<b>70-9-7</b>	48	80	22	30	33	M6	7	12	260	36	66
										38	72
										40	78
<b>70-9-8</b>	50	90	22	30	34	M6	9	12	320	38	89
										40	96
										42	103
<b>70-9-9</b>	55	100	23	31	35	M6	8	12	250	42	79
										45	88
										48	97
<b>70-9-10</b>	62	110	23	32	36	M6	12	12	330	48	125
										50	132
										52	135
<b>70-9-11</b>	68	115	23	33	37	M6	10	12	260	50	97
										55	106
										60	120
<b>70-9-12</b>	75	138	25	33	39	M8	7	30	270	55	119
										60	137
										65	155
<b>70-9-13</b>	80	145	25	33	39	M8	7	30	260	60	124
										65	140
										70	158
<b>70-9-14</b>	85	155	30	42	47	M8	10	30	290	60	169
										65	190
										70	212
<b>70-9-15</b>	90	155	30	40	46	M8	10	30	270	65	170
										70	190
										75	212
<b>70-9-16</b>	95	170	34	47	53	M8	12	30	280	65	195
										70	217
										75	240