

Installation and Operational Instructions for Limit Switch Type 055.012.6 (Contactless, with Mounting Flange)

(B.0550126.GB)

Manufacturer's Declaration

This product is intended for installation in a machine or system, based on the machine directive 2006/42/EC. It is forbidden to start use of the product until the machine or system into which it should be built is operating in accordance with the EC directives.

The product corresponds to the low voltage directive 2006/95/EC.



Safety Regulations Danger!

To prevent injury or damage, only professionals and specialists should work on the devices, following the relevant standards and directives. Please read the Installation and Operational Instructions carefully before installation and initial operation of the device.

- Please check switch adjustments for function by simulating operating conditions before initial start-up



Warning:

Without a conformity inspection, this product is not suitable for use in areas where there is a high danger of explosion. This statement is based on directive 94/9 EC (ATEX directive).

Application

The inductive proximity switch monitors and detects operating conditions on EAS[®] overload clutches. Axial movements caused by overload or switching procedures are registered by the proximity switch. The signal can be used for further process controlling e.g. for drive switch-off.

Function

When the overload clutch disengages, the inductive proximity switch converts from a damped to an undamped position and the signal level on the output (2) changes from the input voltage value to 0V.

Electrical Connection

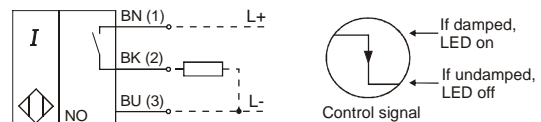
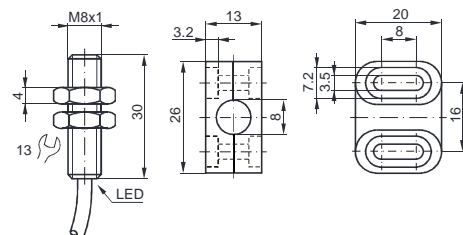
1	L+	BN (brown)
2	NO contact	BK (black)
3	L-	BU (blue)

Technical Data

Identification code	NBB1,5-8GM30-E2-Y
Size	M8 x 1
Type	Rustproof stainless steel
Input voltage	10-30 VDC PELV
No-load supply current	≤15 mA
Power capacity	100 mA
Frequency of operating cycles	Max. 3000 Hz
Contact type	PNP-NO contact
Operating distance s_n	1.5 mm, flush installation
Assured operating distance s_a	1.2 mm
Characteristics	Inverse polarity protection Clocking short circuit protection Switching condition indicator via LED
Connection type	Cable 3 m / PUR
Connection cross-section	0.14 mm ²
Tightening torque	10 Nm
Ambient temperature	-25 °C up to +70 °C
Protection	IP 67
Accessories	Mounting flange



Dimensions (mm)



Installation:

