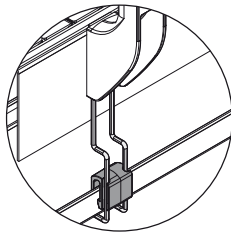
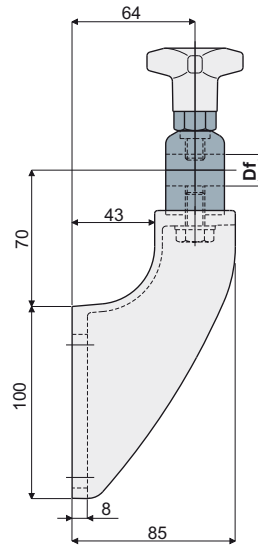
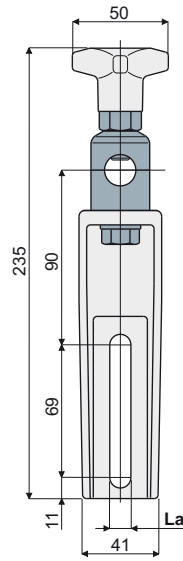


Guide rail brackets

Guide rail bracket Part. 218 (with metal adjustable head)



Presetting for drip tray support (see on page 22)



Df Bore for pin of (mm)	La (9 mm slot)	
	Head made out of nickel plated brass Code	Head made out of stainless steel AISI 304 Code
14 - 16	218 / 82112	218 / 82113

Df Bore for pin of (mm)	La (11 mm slot)	
	Head made out of nickel plated brass Code	Head made out of stainless steel AISI 304 Code
14 - 16	218 / 80662	218 / 80663

MATERIALS: Bracket and knob made out of reinforced polyamide black colour; head made out of stainless steel AISI 304 or nickel plated brass; hexagonal insert made out of nickel plated brass; screw and washer made out of stainless steel AISI 304.

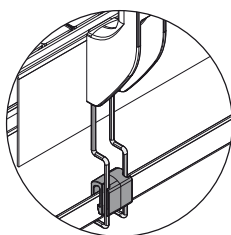
FEATURES: Possibility to use pins with diameter 14 and 16 mm. Max tightening torque 4 Kg-m.

BOX QUANTITY: 24 pieces.

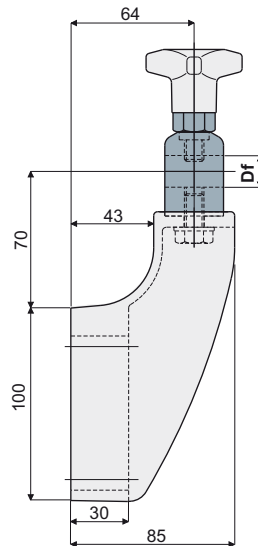
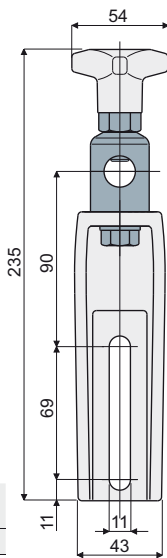
ON REQUEST:

- **Brackets:** In reinforced polypropylene, other colours.
- **Box Quantity:** According to your request.

Guide rail bracket Part. 244 (reinforced type with metal adjustable head)



Presetting for drip tray support (see on page 22)



Df Bore for pin of (mm)	Head made out of	
	nickel plated brass Code	stainless steel AISI 304 Code
14 - 16	244 / 81006	244 / 81007

MATERIALS: Bracket and knob made out of reinforced polyamide black colour; head made out of stainless steel AISI 304 or nickel plated brass; hexagonal insert made out of nickel plated brass; screw and washer made out of stainless steel AISI 304.

FEATURES: To be used for heavy applications, suitable in conveyors with more ways, both in accumulation and curve. Possibility to use pins with diameter 14 and 16 mm. Max tightening torque 4 Kg-m.

BOX QUANTITY: 24 pieces.

ON REQUEST:

- **Brackets:** In reinforced polypropylene, other colours.
- **Box Quantity:** According to your request.