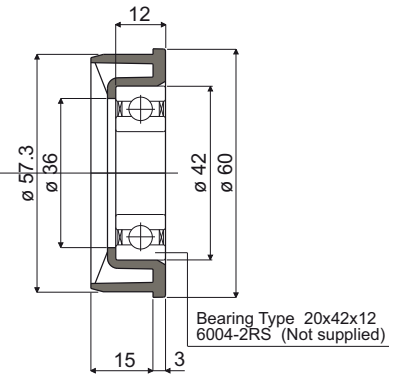
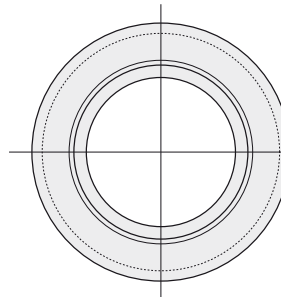


Bearing supports

Part. 300 Bearing-holder flange



Pressure fitted

Code
300 / 82682

MATERIALS: Flange is made of polyamide black colour.

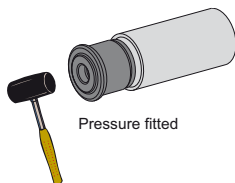
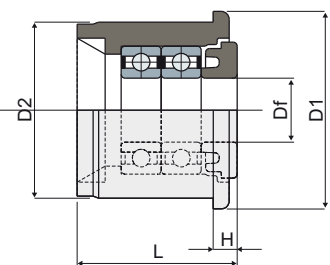
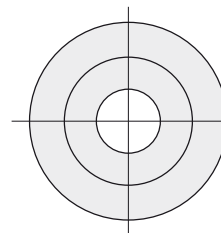
FEATURES: To be inserted in the tube sides D=60,3 thickness 1,5 mm to build a roller conveyor or rollers for chain return. Supplied without bearing.

BOX QUANTITY: 24 pieces.

ON REQUEST:

- Flanges: Supplied assembled with bearings.
- Box Quantity: According to your request.

Part. 317 Bearing support for conveyor rollers (with protective shield)



Pressure fitted

Tube dimensions			Bore for pin of					Code	Bearing type
Outside \varnothing (mm)	Thickness (mm)	Inside \varnothing (mm)	D1 (mm)	D2 (mm)	H (mm)	L (mm)	Df (mm)		
25	1,5	22	25	22	3	20	8	317 / 82911	688/8-2RS
25	1,5	22	25	22	3	20	8	317 / 82912	Supplied without bearings

MATERIALS: Bearing support with internal part and external bushing made of polyamide black colour; bearing made of chrome steel.

FEATURES: To be inserted in the tube sides to build a roller conveyor.

BOX QUANTITY: 24 pieces.

ON REQUEST:

- Bearing supports: other colours.
- Box Quantity: According to your request.