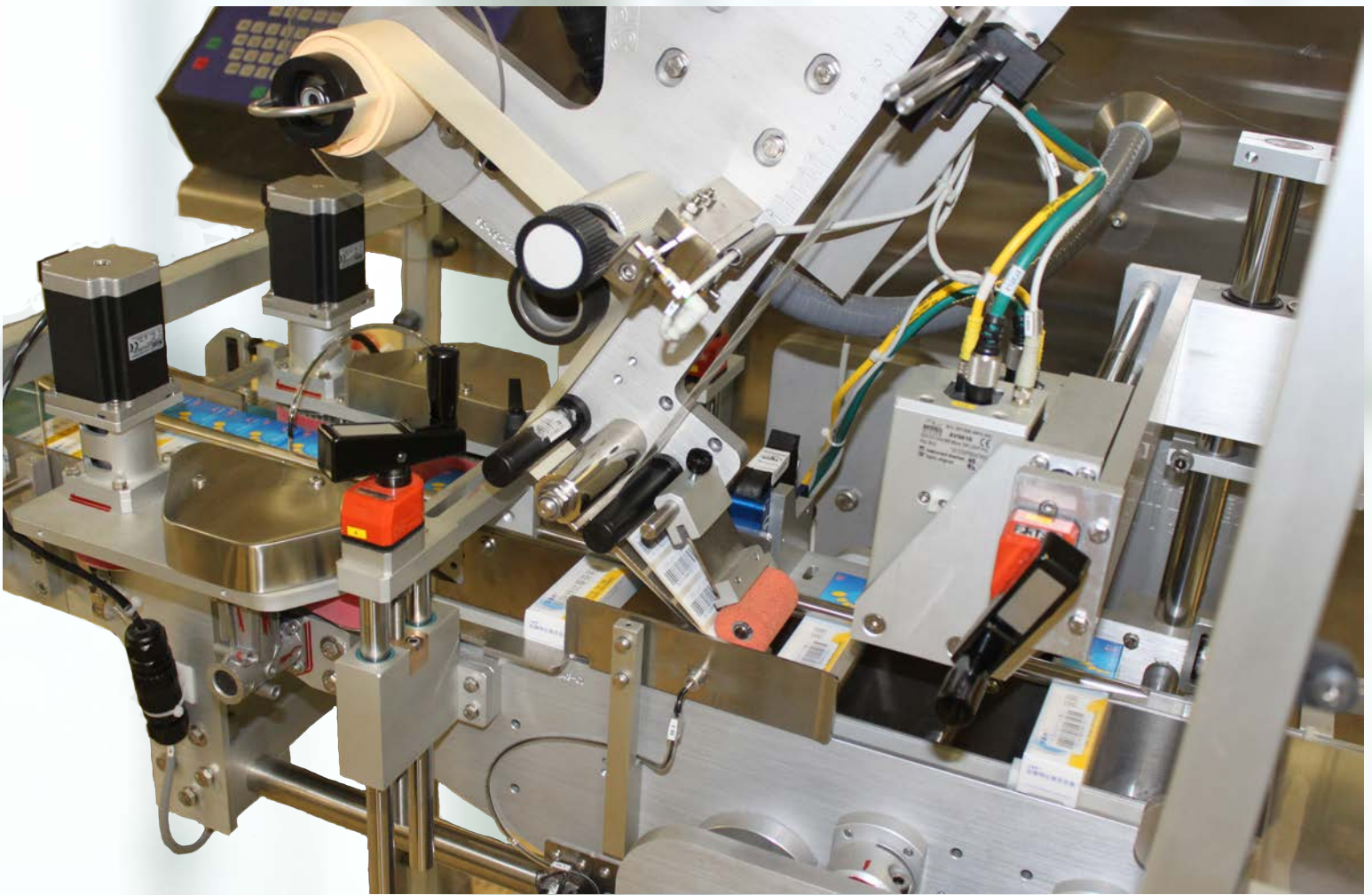


# SERIALIZATION

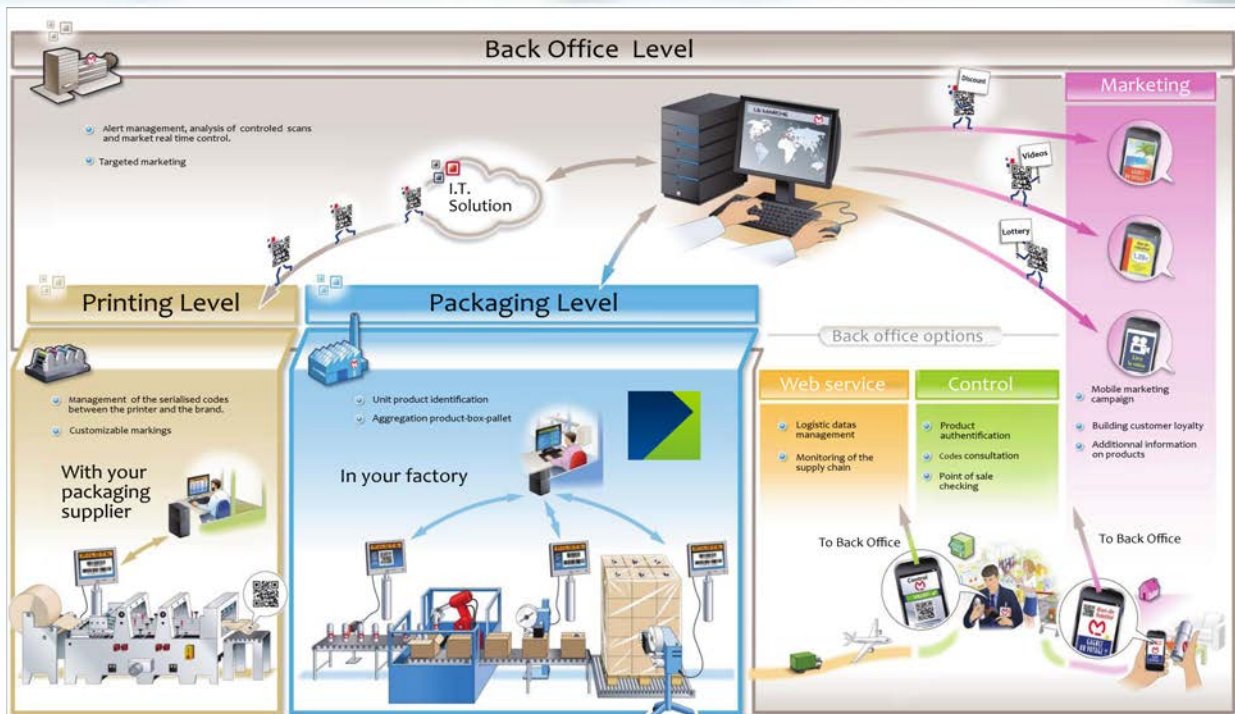
By Track & Trace technology



- TODAY: mandatory in the Pharmaceutical Industry....
- TOMORROW: in all fast-moving Consumer goods!

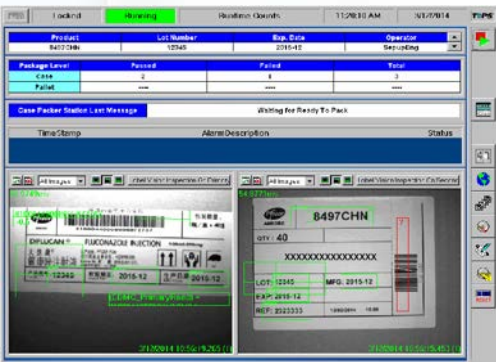


**CERMEX**



### ■ WHAT IS ABOUT?

- Guaranteeing the traceability of each product in real time, from production to the consumer
- Fighting against counterfeiting, deterioration of your turnover and infringement of your corporate image
- Providing invaluable marketing/consumer data
- Improving the efficiency and effectiveness of drug recalls



### ■ WHAT DOES CERMEX HAVE TO OFFER?

- An expertise covering serialization, aggregation and association of your products
- Machine design allowing the integration of standard functions as well as advanced specific requirements
- Collaboration with the integrator of your choice or comprehensive supply of machine and tracking
- Use of latest technology in vision and printing



## First in line

Cermex  
87, route de Seurre - B.P.3 - 21910 Corcelles-lès-Cîteaux - France  
Tél. : +33 (0) 380 707 100

Gebo Cermex Headquarters  
Rue du Commerce, CS 73455 Reichstett - 67455 Mundolsheim - France  
Tél. : +33 (0) 388 183 850

■ [contact.us@gebocermex.com](mailto:contact.us@gebocermex.com)

■ [www.gebocermex.com](http://www.gebocermex.com)



# CERMEX